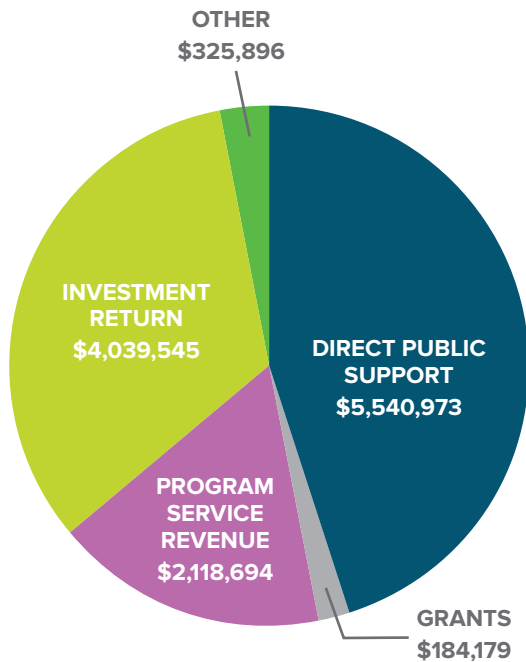


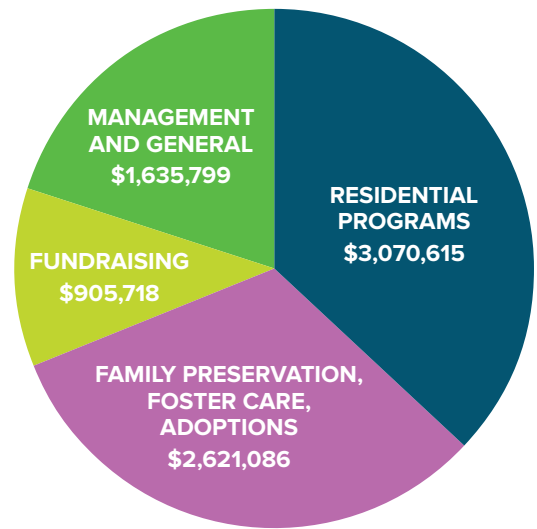
2021 FINANCIAL REPORT

The support of many churches and donors has allowed our ministry to grow significantly over the last several years, but especially in 2021. Last year, our ministry saw an 83% increase in the number of individuals we served through our residential homes in Alabama and Florida, and a 40% increase in the number of days that we provided care in these homes. Throughout all of our ministries, we served 20% more vulnerable children and families in 2021 than in 2020, and 37% more than the previous 4-year average.

None of this growth would be possible without the overwhelming support we receive from our churches and donors. Government funding for care of our children continues to dwindle, but amidst a global pandemic, our supporters have stepped up to help vulnerable children and families like never before. You have given to our mission more in the last two years than we have ever experienced in the history of our agency. Thank you for your generous support!



REVENUES, SUPPORT, AND GAINS



TOTAL EXPENSES

CONTACT US:

Rebecca Morris, Senior Vice President of External Affairs
205-837-0141 | rebecca.morris@letsembracekids.org



EMBRACE
ALABAMA KIDS



EMBRACE
FLORIDA KIDS

MINISTRIES OF UMCH